

1345 ENCLAVE PARKWAY

FLOOR 1



For Leasing Inquires:

EVELYN WARD

713.270.3352

Evelyn.Ward@transwestern.com

JOHN HEARD

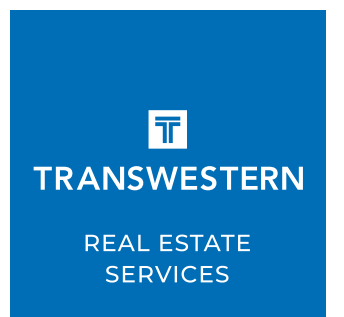
713.819.7153

John.Heard@transwestern.com

ERIC ANDERSON

713.407.8704

Eric.Anderson@transwestern.com



1345 ENCLAVE PARKWAY

FLOOR 2



For Leasing Inquires:

EVELYN WARD

713.270.3352

Evelyn.Ward@transwestern.com

JOHN HEARD

713.819.7153

John.Heard@transwestern.com

ERIC ANDERSON

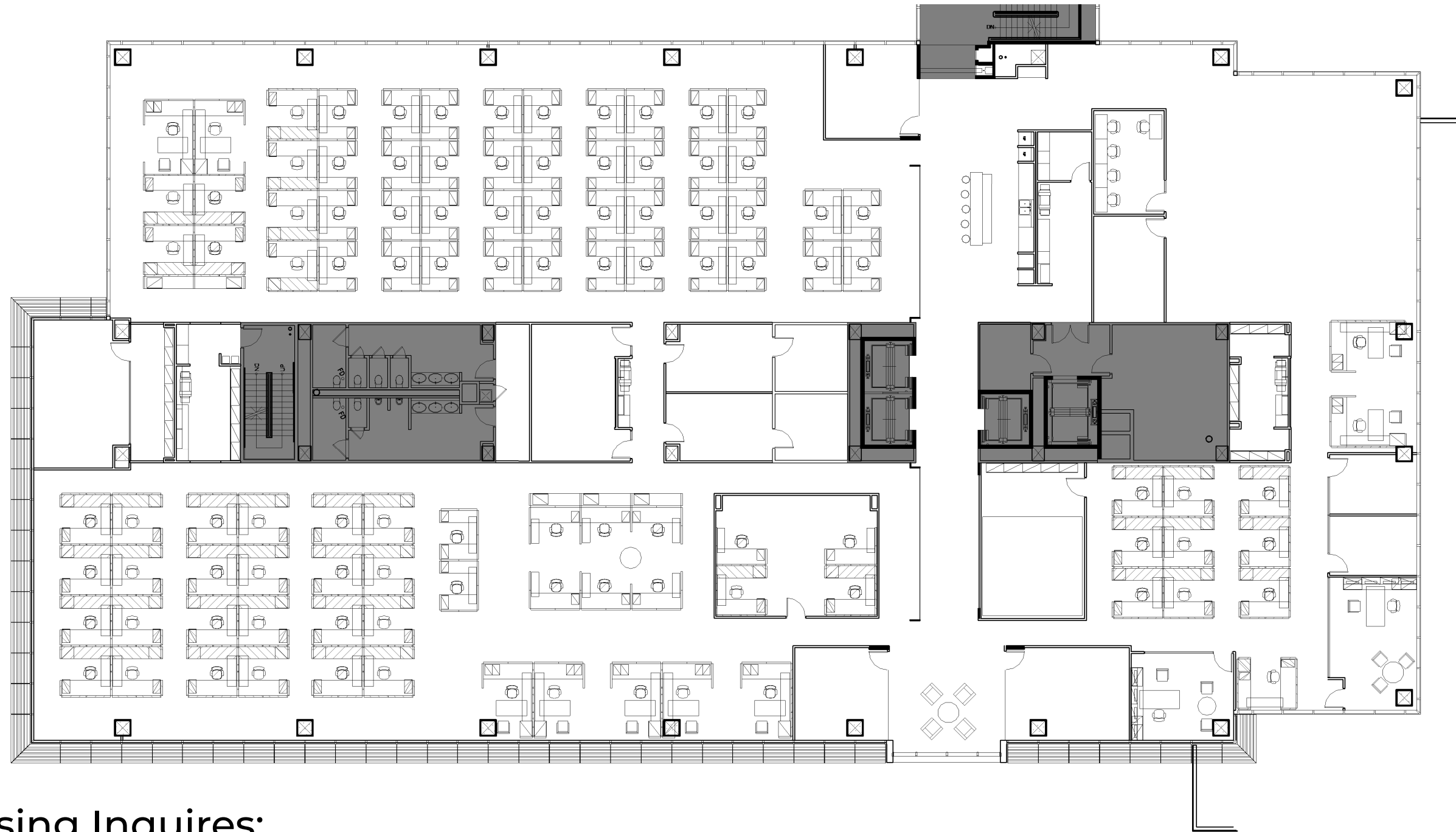
713.407.8704

Eric.Anderson@transwestern.com



1345 ENCLAVE PARKWAY

FLOOR 3



For Leasing Inquires:

EVELYN WARD

713.270.3352

Evelyn.Ward@transwestern.com

JOHN HEARD

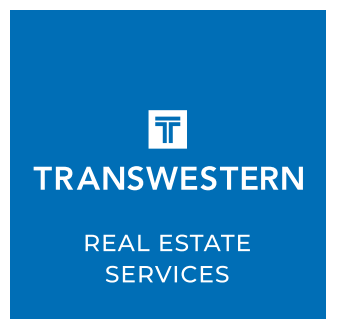
713.819.7153

John.Heard@transwestern.com

ERIC ANDERSON

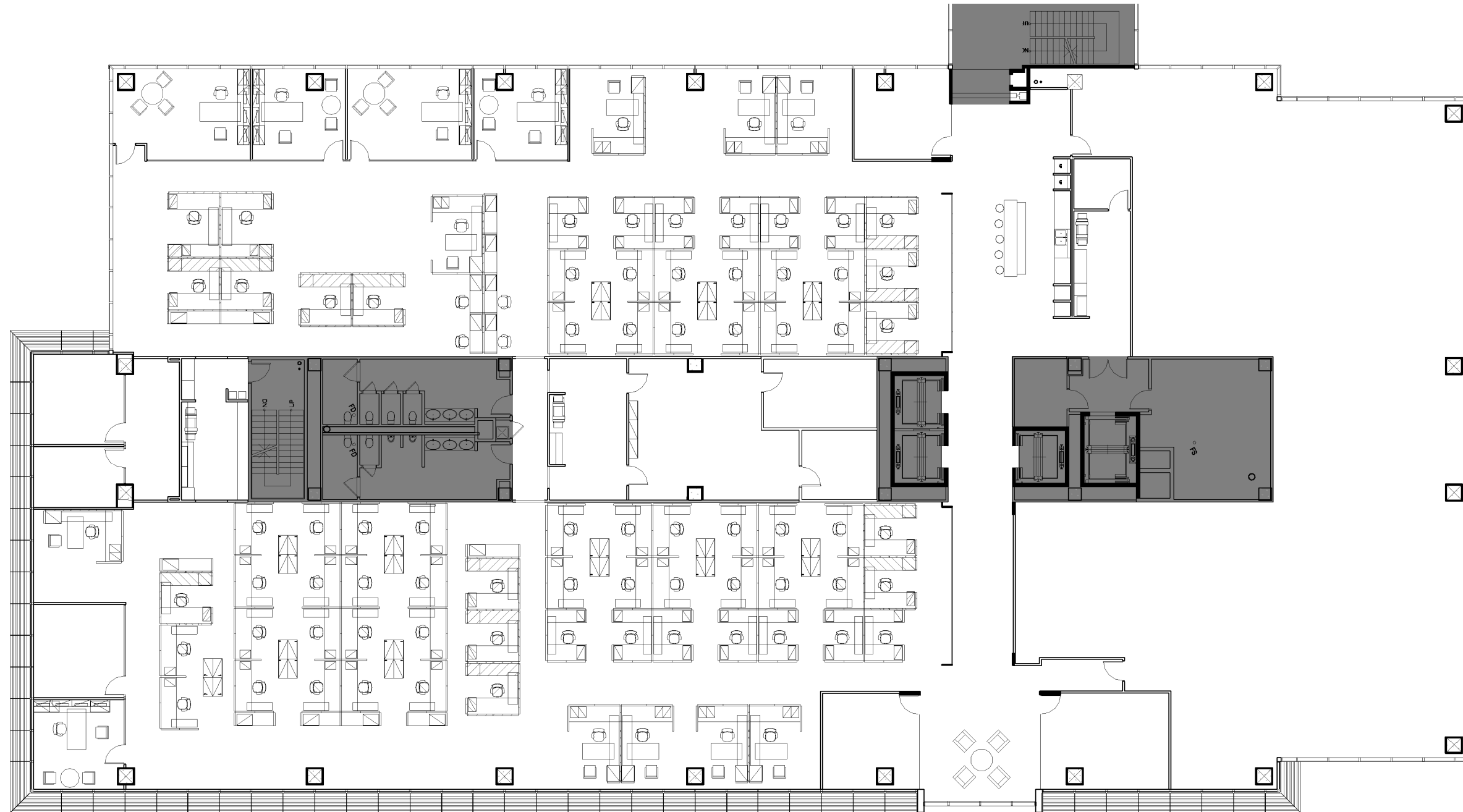
713.407.8704

Eric.Anderson@transwestern.com



1345 ENCLAVE PARKWAY

FLOOR 4



For Leasing Inquires:

EVELYN WARD

713.270.3352

Evelyn.Ward@transwestern.com

JOHN HEARD

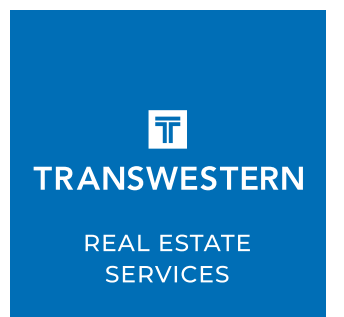
713.819.7153

John.Heard@transwestern.com

ERIC ANDERSON

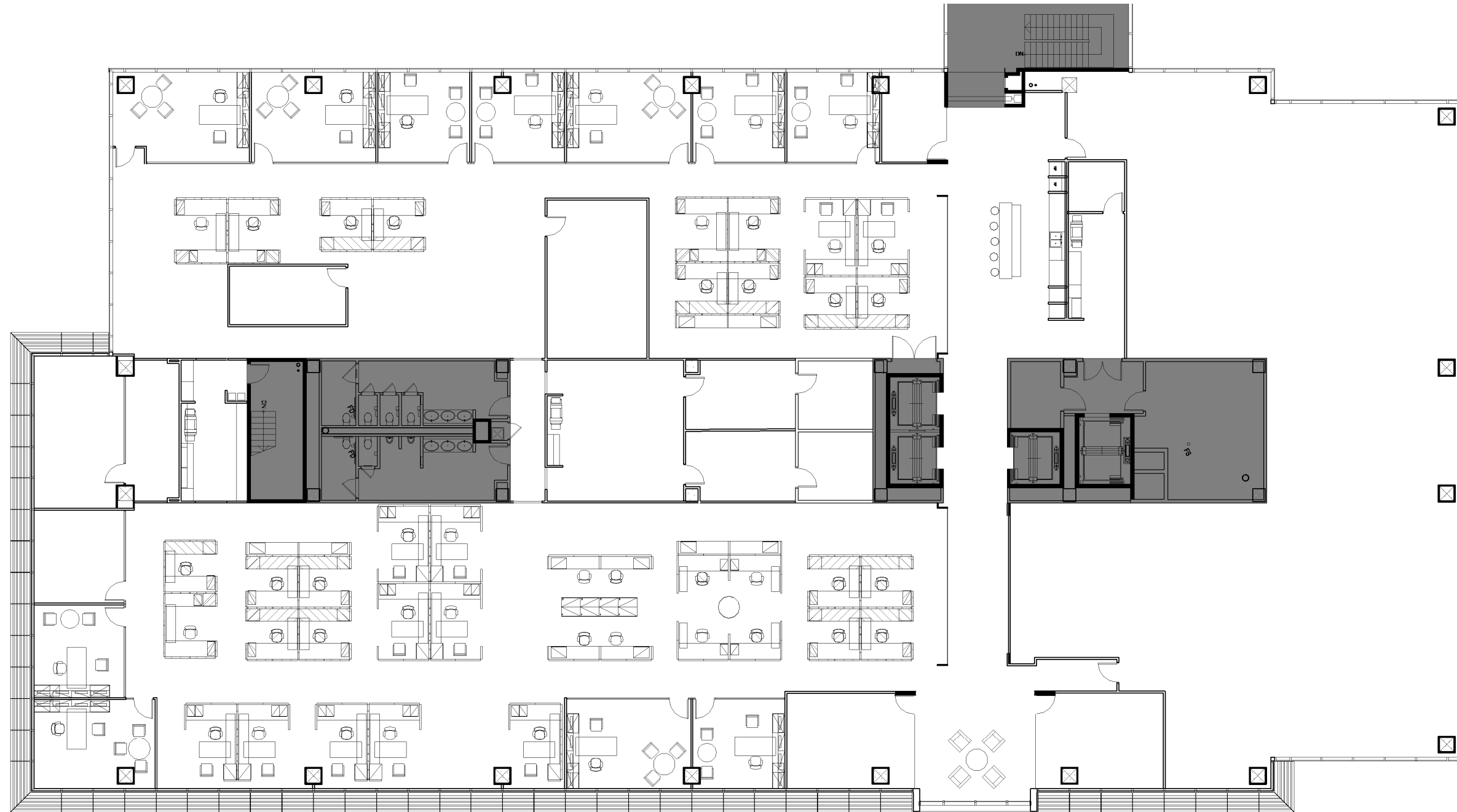
713.407.8704

Eric.Anderson@transwestern.com



1345 ENCLAVE PARKWAY

FLOOR 5



For Leasing Inquires:

EVELYN WARD

713.270.3352

Evelyn.Ward@transwestern.com

JOHN HEARD

713.819.7153

John.Heard@transwestern.com

ERIC ANDERSON

713.407.8704

Eric.Anderson@transwestern.com


TRANSWESTERN
REAL ESTATE
SERVICES